

# Grasim Pulp and Fibre *Power Management*

**1100+**  
**Energy Meters**

Digitized sending 40+  
Parameters for a 40 MW  
Captive Generation

**Drill Down  
Analysis**

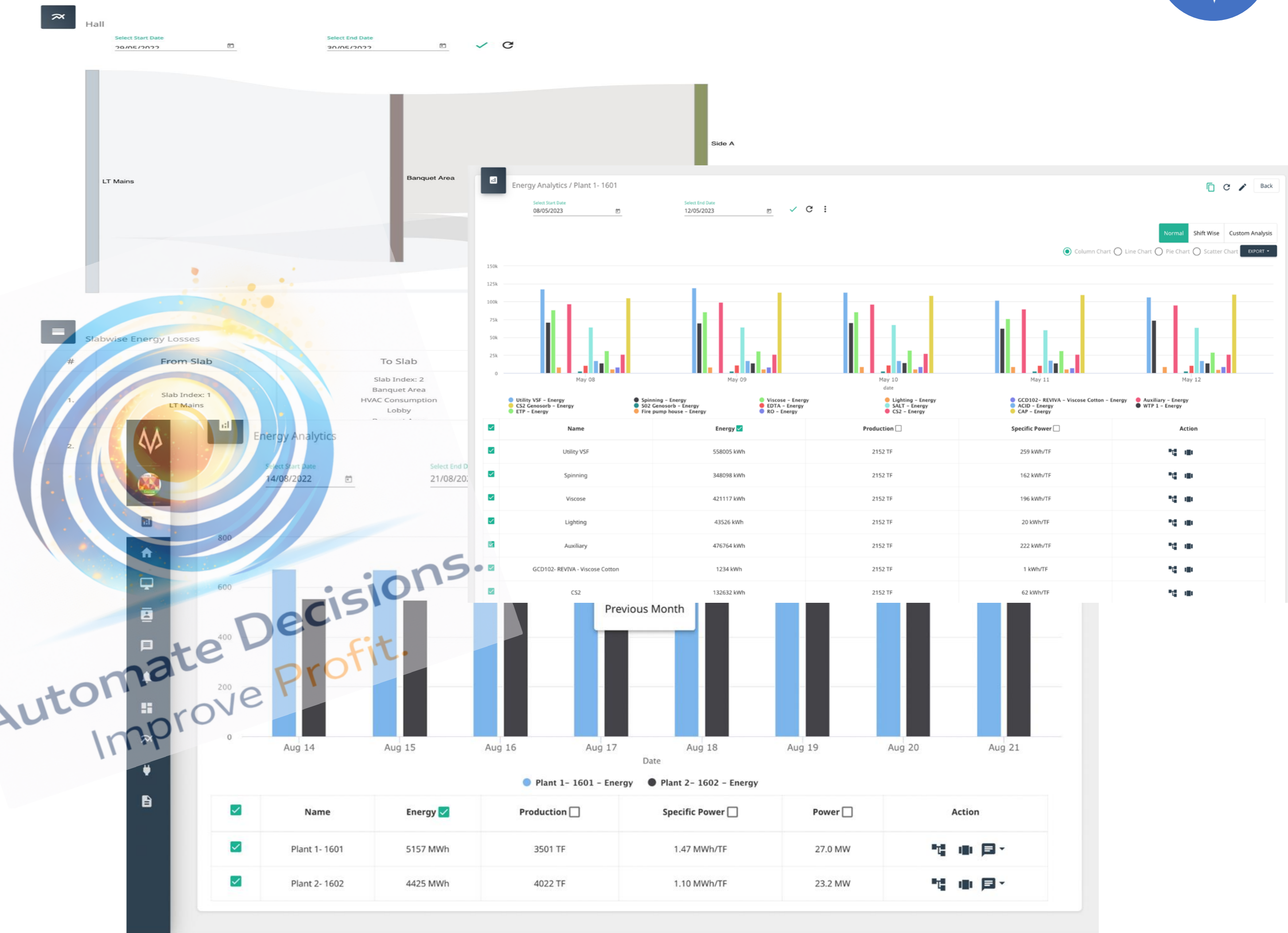
MIS Reports for smart  
Manufacturing

**Algo Compute**

To derive Specific  
Production Metrics and  
Projected Production

**INR 4 cr+**

Savings achieved for  
Aditya Birla Grasim



Automate Decisions.  
Improve Profit.



# Grasim Pulp and Fibre *Steam Trap Failure Detection*

**125+ Traps**

Digitized using wireless battery powered Lo-Ra technology

**31 Failures**

Detected upon weeks of implementation

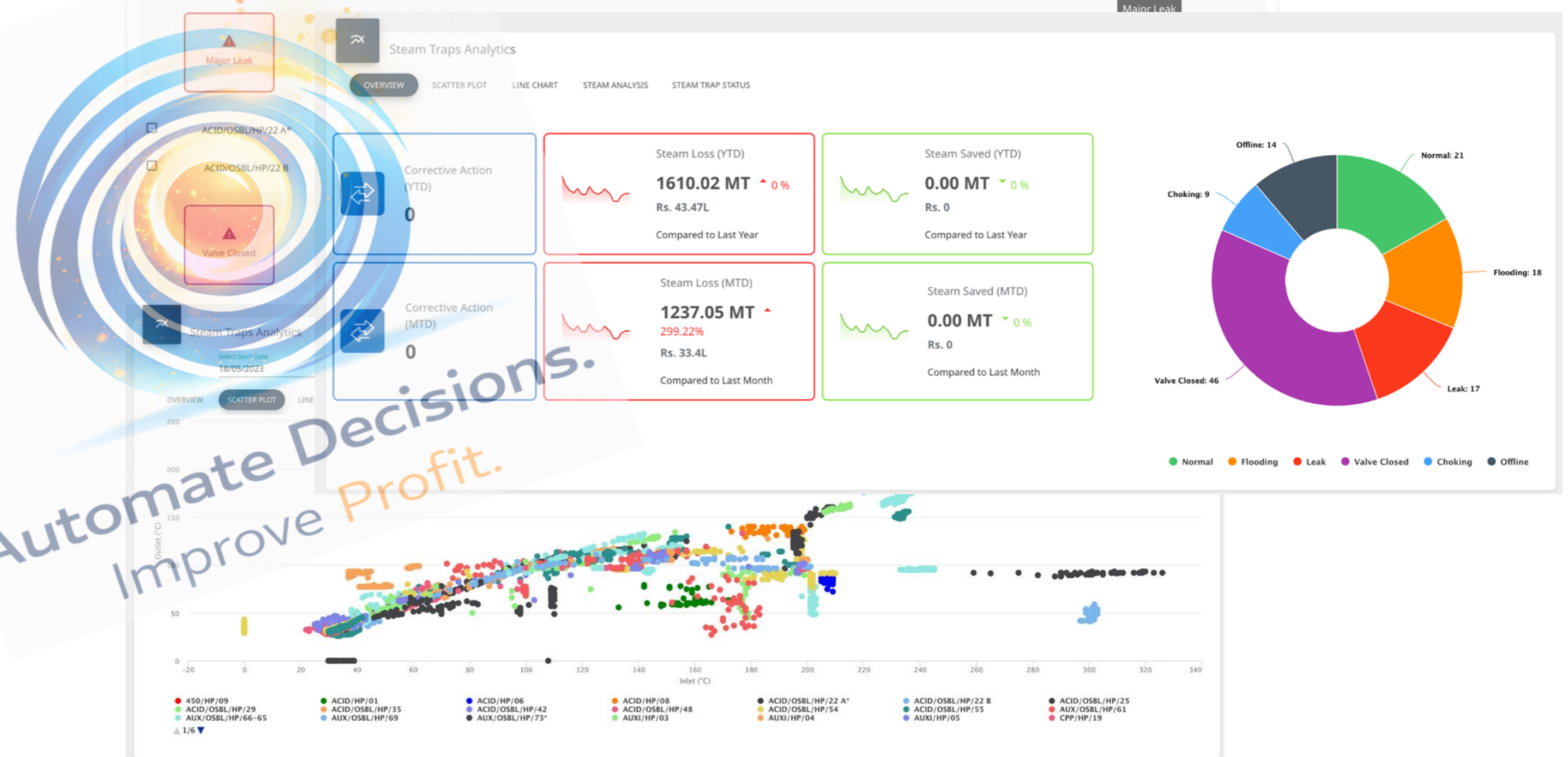
**INR 60 Lakh**

Projected Potential of savings in a year

**2025 MT**

Of Steam conservations projected for an entire year

ID	Location	Inlet Temp (°C)	Outlet Temp (°C)	Status
450/HP/09	Salt Building Hp steam line	15	100	Normal
ACID/HP/01	Acid plant inside	15	100	Major Flooding
ACID/HP/06	Acid plant inside	15	100	Normal
ACID/HP/08	Acid plant inside	15	100	Major Leak



Automate Decisions.  
Improve Profit.